



INTEGRATED DRILLING&WELL SERVICES Co., Ltd.  
A MEMBER OF THE **UMA** GROUP

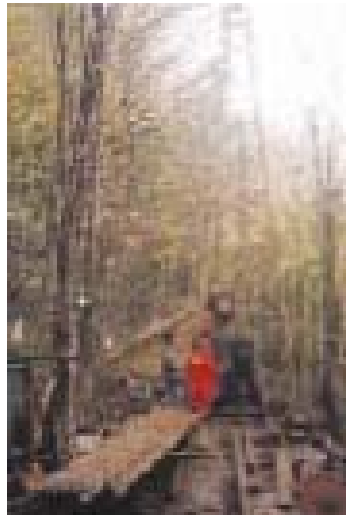
---

# Janez J 600

---

## Drilling Rig

---



Drilling rig is designed for:

- exploratory drilling in hard formations up to 400 m
- geomechanical drilling in all formations except gravel and expanding clays

### **TECHNICAL DATA:**

---

Year of manufacture: 1988  
Drilling rig is skid-mounted.  
Mast length: 8500 mm  
Mast bearing capacity: 5000 kg

### **BOREHOLE DIMENSIONS:**

---

Maximal depth: 400 m  
Drilling diameter: 64-146 mm

### **TRANSPORT DIMENSIONS:**

---

Length: 2420 mm  
Width: 1200 mm  
Height: 1620 mm  
Weight: 1950 kg

### **ENGINE:**

---

Manufacturer: TORPEDO - DEUTZ  
Type: F4L912AL (diesel)  
Power installed: 38 kW (52 HP) at 2000 rpm

### **PUMP:**

---

Manufacturer: GEOMASINA  
Type: PC-120 (piston pump with max. flow 120 l/min)